

AP Degree Programme in Design, Technology and Business Admission Assignment – September 2015

Pattern Design

Practical information

The admission assignment must be submitted electronically. Therefore, please scan your material into one PDF-document and e-mail it to applica.ak@via.dk.

Your application may be declined if your admission assignment is not filed in one document.

The admission assignment consists of five tasks.

Please write the number of each task in the upper right corner of the document.

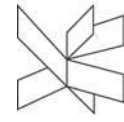
Your admission assignment should demonstrate your basic competences. Please note that the admission assignment is not an assignment with only one correct answer.

We consider it important that your material is drawn by hand. Please make sure that your drawings are clearly visible when scanned.

Your admission assignment will be assessed, and you will be enrolled in VIA Design course programme if your admission assignment complies with our admission requirements. You may be asked to take part in an interview as well.

Important deadlines

15 March	The admission assignment must be submitted to applica.ak@via.dk electronically
23 March - 1 May	Skype interviews
1 - 5 June	Applicants will be given notice of admission, waiting list or rejection by e-mail

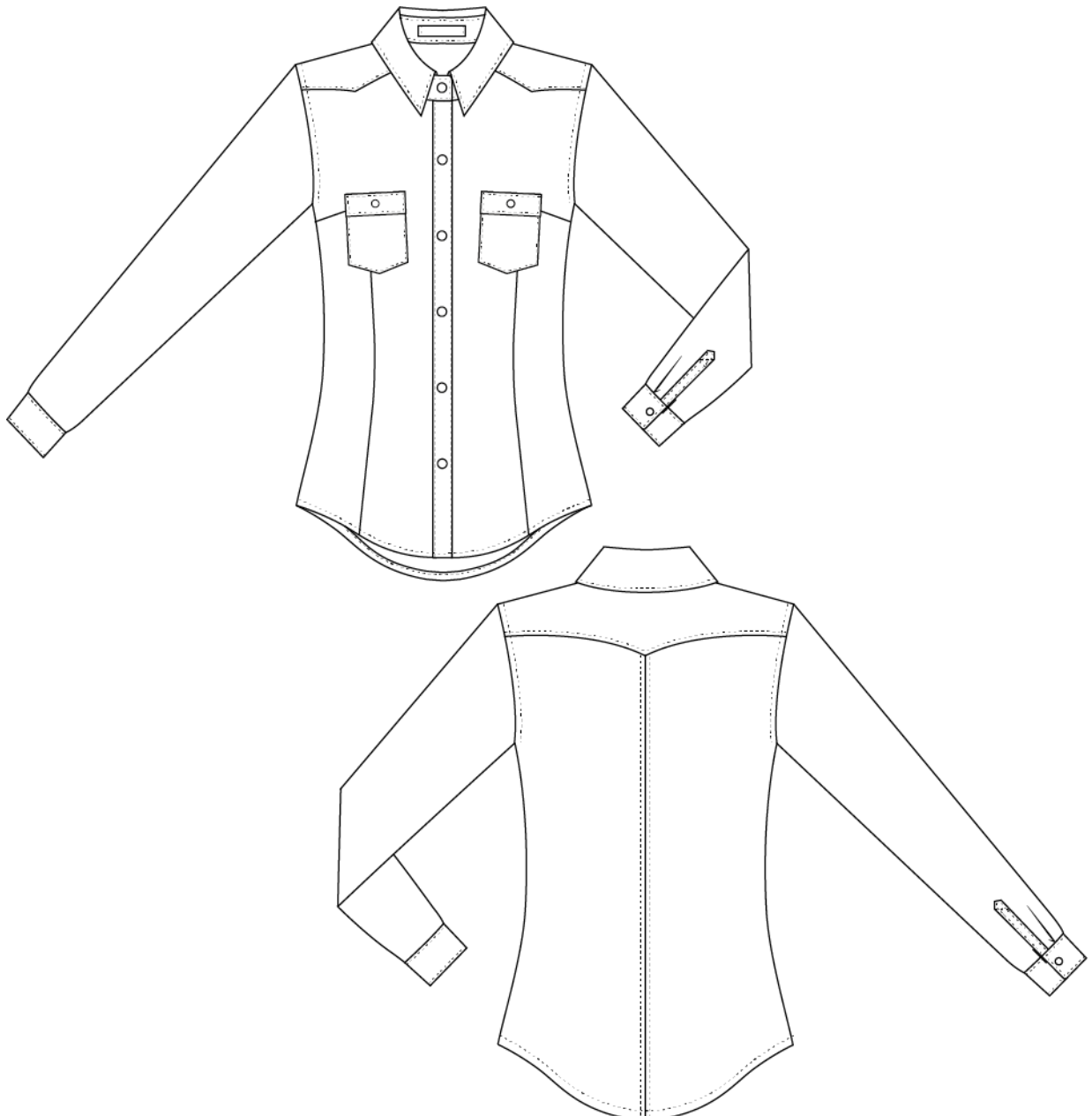


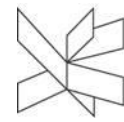
Admission assignment

Task 1

A typical pattern design task is to prepare or interpret a working sketch. As a pattern designer, you must therefore have a sense of form and proportions. A working sketch is a visual form of communication through which design ideas may be communicated and understood regardless of language or country. It is of great importance that a working sketch provides a correct illustration of silhouette, proportions and details such as cuttings, stitchings, openings, etc. A working sketch may be drawn three-dimensionally as if the garment sketched was seen on an invisible body.

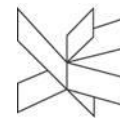
Here is an example of a working sketch of a shirt. The working sketch shows the shirt from the front and back:





You should prepare a working sketch for the three products below. Your working sketch should illustrate the products from the front and from the back. You decide how the products look from the back:

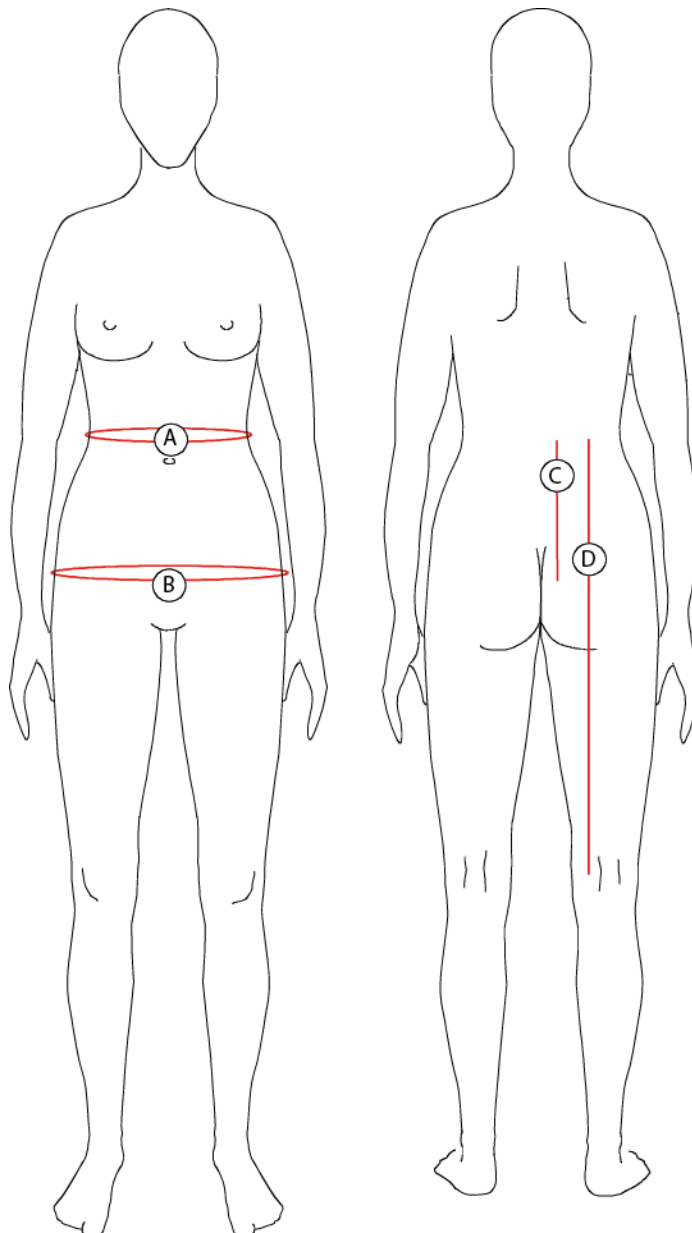


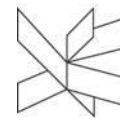


Task 2

As a pattern designer, you design patterns for garments based on body measurements. For this purpose, you use a body measurement chart. See the below examples of measurements relevant for a skirt size 36 to 42. The measurements are in centimeters.

BODY MEASUREMENT					
	SIZE	36	38	40	42
A	WAIST	68	72	76	80
B	HIP	92	96	100	104
C	HIP DEPTH	20.8	21	21.2	21.4
D	WAIST TO KNEE	58.8	60	60.2	60.4



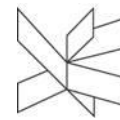


A measurement chart is also used for calculating grading charts. A grading chart shows the difference in measurements between sizes. You use this information when making a garment in another size than the base size (here the base size is 38). Fill in the blanks in the grading chart below. The measurements are in centimeters.

GRADING CHART				
	SIZE STEP	36-38	38-40	40-42
A	WAIST	4		
B	HIP			
C	HIP DEPTH		0.20	
D	WAIST TO KNEE			

Pattern designers prepare measurement charts for finished products, with all the measurements of the finished product. A measurement chart for a product is prepared based on the measurements in the body measurement chart. In the product measurement chart, you then add extra width depending on the silhouette and design of the product. The product measurement chart is for a skirt in size 38. Please complete the product measurement chart by adding measurements for the other sizes based on your calculations in the grading chart. Measurement E and F are not shown in the body measurement chart. You should calculate and assess these two measurements yourself. To do so, you will need to know that the side seams of the skirt are parallel in all sizes, and that F is 1/3 of front piece width.

	SIZE	36	38	40	42
A	WAIST		73		
B	HIP		99		
C	HIP DEPTH		21		
D	LENGTH CB		60		
E	HEM WIDTH		108		
F	PANEL WIDTH		18		



Task 3

If a person has a waist of 68 cm, and a skirt has a waist of 72.50 cm, how many percentages is the waist of the skirt then too large compared to the body measurement?

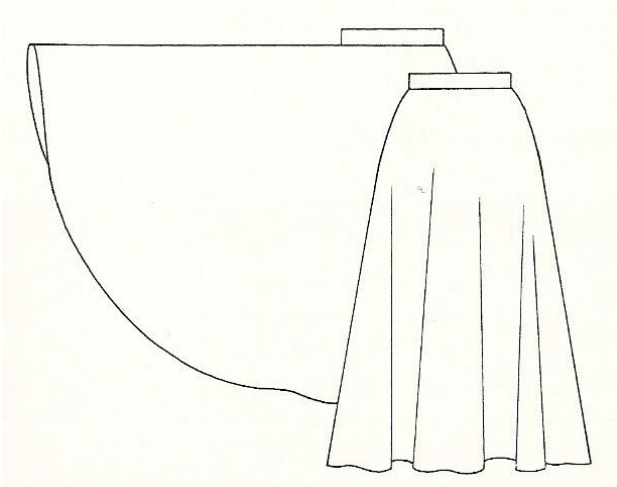
Task 4

Below you should calculate the measurements for a circular skirt:

Waist 68 cm

Skirt length 55 cm

- a) Calculate the radius of circle that equals the waist.



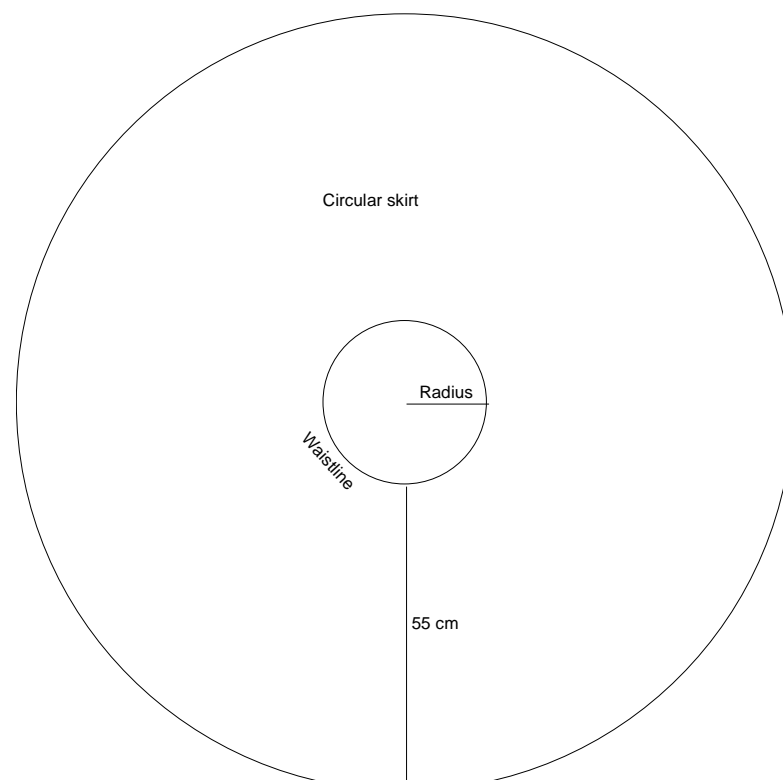
- b) Calculate the radius of circle that equals the skirt length.

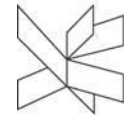
For your calculations, use the formula for calculating a circle which is $C = 2 \times r \times \pi$

C = circumference

r = radius

$\pi = 3.14$





Task 5

As a pattern design student, you should construct patterns in a CAD computer programme and then print them out. To assess the fit and make adjustments, if necessary, you then cut out the pattern pieces and sew the product. A pattern designer should also be able to communicate with external suppliers through documentation in English.

Give a brief description of yourself and your interest in clothing and fit: Do you sew? Are you used to working on a computer? How do you feel about communicating in English orally and in writing? Why are you interested in studying pattern design and what would you like to work with in the future? Why would you like to become a pattern designer?

Please write one A4 sheet in English (approx.. 2000 typing units).

Have fun preparing your admission assignment.